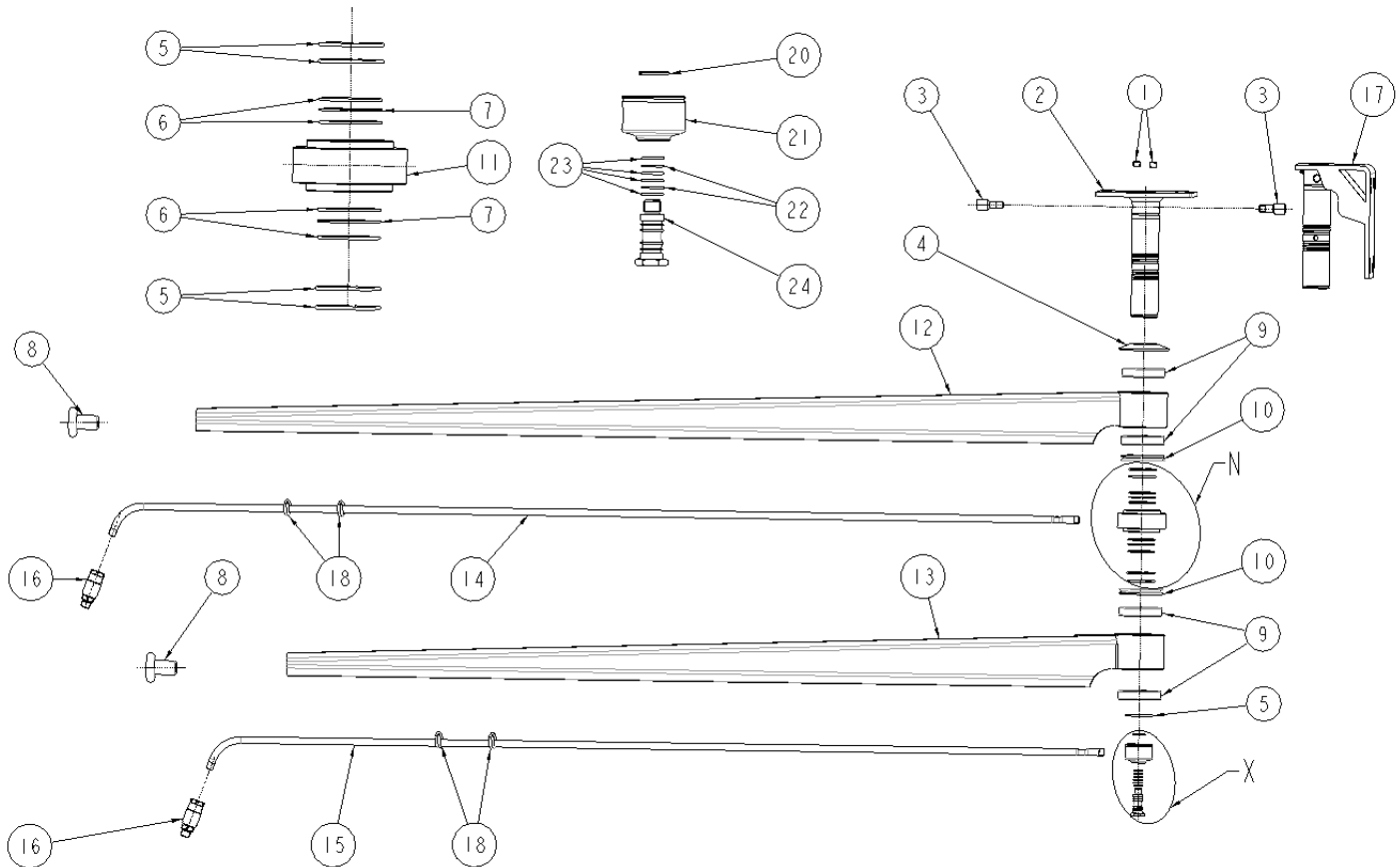


“BRACCIO DOPPIO RIGIDO” “RIGID DOUBLE BOOM”

Disegno esploso / Exploded view





MTM Hydro s.r.l.
Via Moglia, 33 – 12062 **CHERASCO (CN)**
tel. (+39) **0172.49.59.30** - fax (+39) **0172.49.54.37**
web-site **www.mtmhydro.it** e-mail **info@mtmhydro.it**



Distinta base / Bill of material

Codice Code	q.tà q.ty	pos. item	kit	Descrizione / Description
35.0086	2	1		Tappo 1/4" /1/4" Plug
36.0036	1	2		Staffa attacco soffitto / Ceiling hang bracket
35.0083	2	3		Prolunga ingresso acqua / Inlet connection extends
39.0100	1	4		Disco di protezione in gomma / Rubber protection gasket
36.0195	5	5		Anello elastico inox / Stainless steel ring
39.0136	4	6	Kit 2	O-ring 46x2 mm
39.0061	2	7	Kit 2	Bk / Back up ring
39.0099	2	8		Protezione in gomma / Rubber ring
39.0075	4	9		Cuscinetto radiale / Radial bearing
39.0098	2	10		Guarnizione / Seal
35.0087	1	11		giunto intermedio / Intermediate swivel
36.0015	1	12a		Braccio inox L 1750 mm / Stainless steel boom L 1750 mm (25.0036-25.0037-25.0065-25.0045)
36.0027	1	12b		Braccio inox L 2000 mm / Stainless steel boom L 2000 mm (25.0038-25.0039-25.0066-25.0121)
36.0026	1	13a		Braccio inox L 1600 mm / Stainless steel boom L 1600 mm (25.0036-25.0037-25.0065-25.0045)
36.0015	1	13b		Braccio inox L 1750 mm / Stainless steel boom L 1750 mm (25.0038-25.0039-25.0066-25.0121)
28.0138	1	14a		Tubo inox L 1827 mm / Stainless steel hose L 1827 mm (25.0036-25.0037-25.0065-25.0045)
28.0136	1	14b		Tubo inox L 2077 mm / Stainless steel hose L 2077 mm (25.0038-25.0039-25.0066-25.0121)
28.0139	1	15a		Tubo inox L 1692 mm / Stainless steel hose L 1692 mm (25.0036-25.0037-25.0065-25.0045)
28.0137	1	15b		Tubo inox L 1842 mm / Stainless steel hose L 1842 mm (25.0038-25.0039-25.0066-25.0121)
26.0001	1	16 a		Giunto girevole diritto 1/4"- 1/4" / Stainless straight swivel 1/4"-1/4" (25.0036-25.0038-25.0065-25.0066)
26.0002	1	16 b		Giunto girevole diritto 1/4"- 3/8" / Stainless straight swivel 1/4"-3/8" (25.0037-25.0039-25.0045-25.0121)
36.0037	1	17		Staffa attacco parete / Wall hang bracket
39.0131	4	18		O-ring
26.0031	1	X	Kit1	Giunto girevole 90°G1/4°F / 90° swivel body 1/4°F
36.0033	1	20		Rondella inox per giunto a 90° / Stainless steel washer for 90° swivel
35.0078	1	21		Corpo in ottone 1/4" / 1/4" Brass body
39.0060	2	22	Kit1	Anello bk / Back up ring
39.0184	4	23	Kit1	O-ring
36.0018	1	24		Pistoncino inox per giunto a 90° / Stainless steel piston for 90° swivel

Kit di ricambio / Spare parts list

kit	code	Descrizione / Description
Kit 1	41.0023	Kit di ricambio giunto girevole90° / 90° swivel spare part
Kit 2	41.0024	Kit di ricambio giunto intermedio / Intermediate swivel spare part