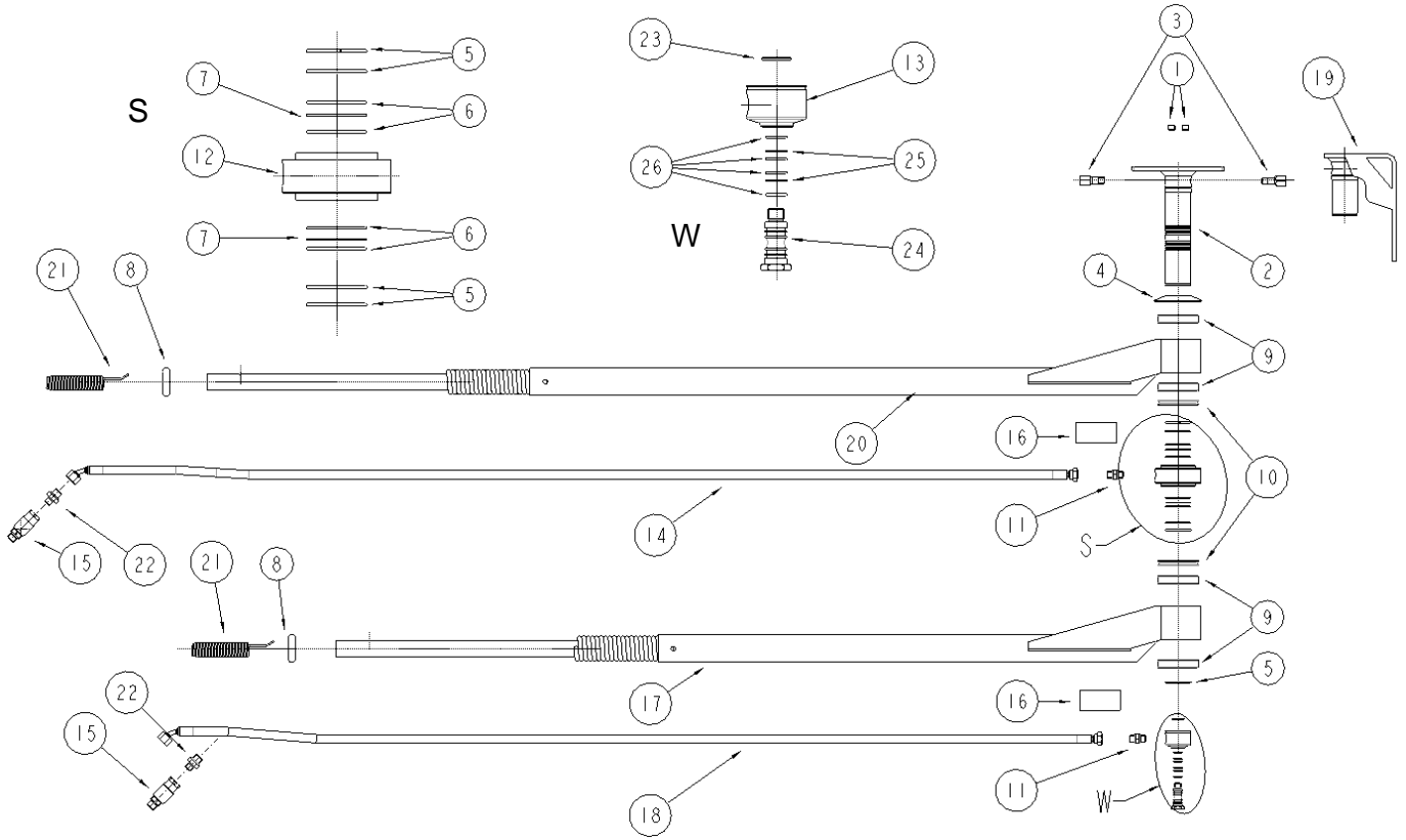


“BRACCIO DOPPIO FLESSIBILE” “FLEXIBLE DOUBLE BOOM”





MTM Hydro s.r.l.
Via Moglia, 33 – 12062 **CHERASCO (CN)**
tel. (+39) **0172.49.59.30** - fax (+39) **0172.49.54.37**
web-site **www.mtmhydro.it** e-mail **info@mtmhydro.it**



Distinta base / Bill of material

Codice Code	q.tà q.ty	pos. item	kit	Descrizione / Description
35.0086	2	1		Tappo 1/4" / 1/4" Plug
36.0036	1	2		Staffa attacco soffitto / Ceiling hang bracket
35.0083	2	3		Prolunga ingresso acqua / Inlet connection extends
39.0100	1	4		Disco di protezione in gomma / Rubber protection gasket
36.0195	5	5		Anello elastico inox / Stainless steel ring
39.0136	4	6	Kit 2	O-ring 46x2 mm
39.0061	2	7	Kit 2	Bk
39.0103	2	8		Anello in gomma / Rubber ring (25.0067, 25.0069, 25.0071, 25.0068, 25.0070, 25.0046, 25.0072)
39.0075	4	9		Cuscinetto radiale / Radial bearing
39.0098	2	10		Guarnizione / Seal
24.0128	2	11		raccordo 1/4"-3/8" / Nipple 1/4"-3/8"
35.0087	1	12		giunto intermedio / Intermediate swivel
35.0078	1	13		Corpo Girevole a 90° G1/4F / 90° swivel body 1/4"F
30.0009	1	14 a		tubo in gomma l 1750 mm / Rubber hose L 1750mm (25.0040-25.0041-25.0067-25.0068)
30.0010	1	14 b		tubo in gomma l 2000 mm / Rubber hose L 2000mm (25.0042-25.0043-25.0070)
30.0011	1	14 c		tubo in gomma l 2500 mm / Rubber hose L2500mm (25.0056-25.0044-25.0071-25.0046)
30.0012	1	14 d		tubo in gomma l 3000 mm / Rubber hose L3000mm (25.0057-25.0058-25.0072)
26.0001	1	15 a		Giunto girevole dritto 1/4" / Stainless straight swivel 1/4" (25.0040-25.0042-25.0056-25.0057-25.0067-25.0069-25.0071)
26.0002	1	15 b		Giunto girevole dritto 3/8" / Stainless straight swivel 3/8" (25.0041-25.0043-25.0044-25.0058-25.0068-25.0070-25.0046-25.0072)
39.0102	2	16		Protezione tubo / Hose protection
36.0028	1	17 a		braccio inox l 1600 mm / Stainless steel boom L 1600mm (25.0040-25.0041-25.0067-25.0068)
36.0025	1	17 b		braccio inox l 1750 mm / Stainless steel boom L 1750mm (25.0042-25.0043-25.0070)
36.0029	1	17 c		braccio inox l 2000 mm / Stainless steel boom L 2000mm (25.0056-25.0044-25.0071-25.0046)
36.0030	1	17 d		braccio inox l 2500 mm / Stainless steel boom L 2500mm (25.0057-25.0058-25.0072)
30.0004	1	18 a		tubo in gomma l 1600 mm / Rubber hose L 1600mm (25.0040-25.0041-25.0067-25.0068)
30.0005	1	18 b		tubo in gomma l 1750 mm / Rubber hose L 1750mm (25.0042-25.0043-25.0070)
30.0006	1	18 c		tubo in gomma l 2000 mm / Rubber hose L 2000mm (25.0056-25.0044-25.0071-25.0046)
30.0007	1	18 d		tubo in gomma l 2500 mm / Rubber hose L 2500mm (25.0057-25.0058-25.0072)
36.0037	1	19		Staffa attacco parete / Wall hang bracket
36.0025	1	20 a		braccio inox l 1750 mm / Stainless steel boom L 1750mm (25.0040-25.0041-25.0067-25.0068)
36.0029	1	20 b		braccio inox l 2000 mm / Stainless steel boom L 2000mm (25.0042-25.0043-25.0070)
36.0030	1	20 c		braccio inox l 2500 mm / Stainless steel boom L 2500mm (25.0056-25.0044-25.0071-25.0046)
36.0031	1	20 d		braccio inox l 3000 mm / Stainless steel boom L 3000mm (25.0057-25.0058-25.0072)
36.0151	2	21		molla inox / Stainless steel spring
24.0127	2	22		raccordo 1/4"-1/4" / nipple 1/4"-1/4"
36.0033	1	23		rondella inox per giunto a 90° / Stainless steel washer for 90°swivel
36.0018	1	24		pistoncino inox per giunto a 90° / Stainless steel piston for 90° swivel
39.0060	2	25	Kit 1	anello antiestrusione giunto 90° / Back-up ring for 90° swivel
39.0184	4	26	Kit 1	anello di tenuta giunto 90° / O-ring for 90° swivel



MTM Hydro s.r.l.

Via Moglia, 33 – 12062 **CHERASCO** (CN)
tel. (+39) **0172.49.59.30** - fax (+39) **0172.49.54.37**
web-site **www.mtmhydro.it** e-mail **info@mtmhydro.it**



Kit di ricambio / Spare parts list

<i>kit</i>	<i>codice</i>	<i>Descrizione / Description</i>
Kit 1	41.0023	Kit di ricambio giunto girevole / 90° swivel spare part
Kit 2	41.0024	Kit di ricambio giunto intermedio / Intermediate swivel spare part